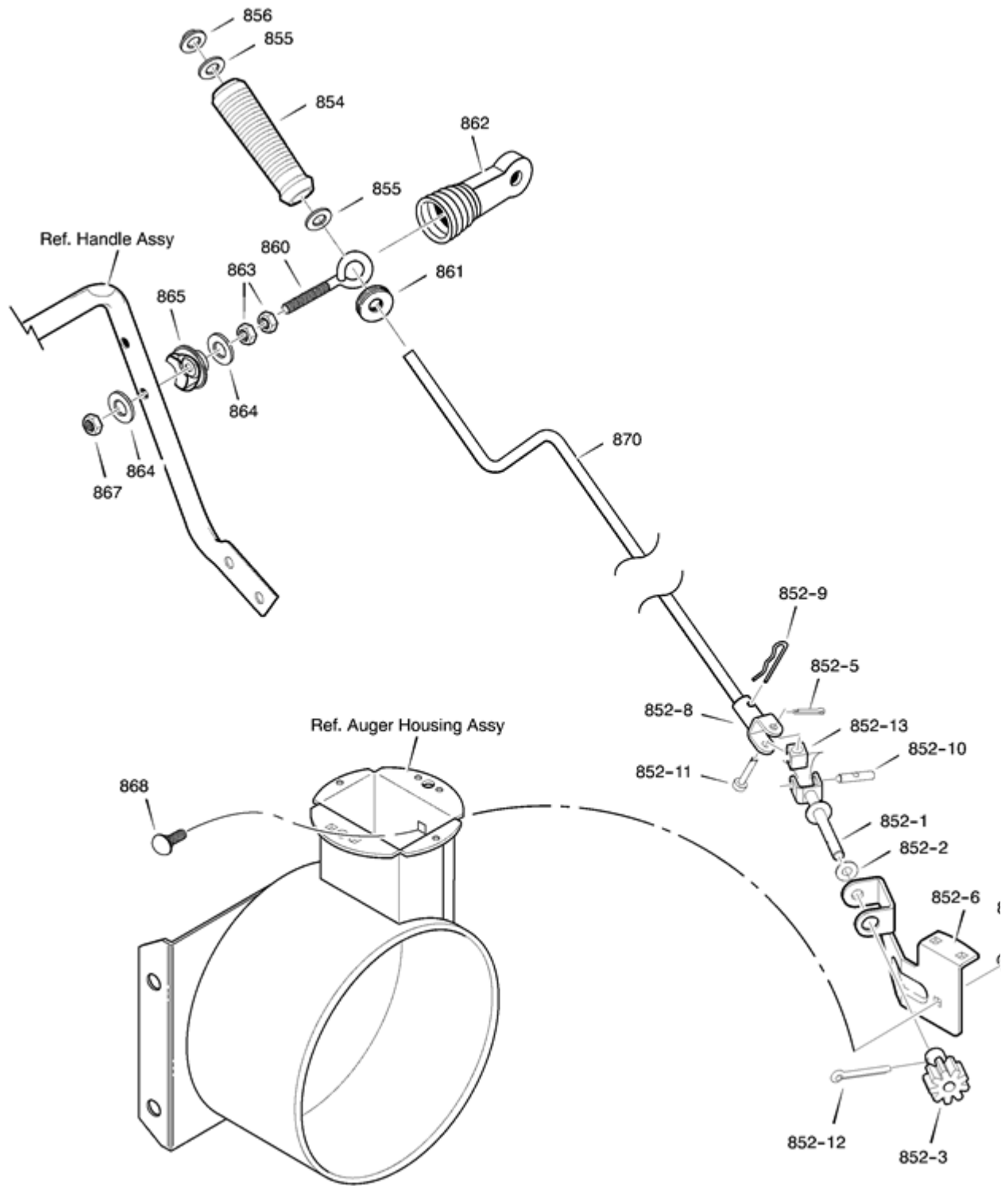











Supercessions	Ref #	Part #	<input checked="" type="checkbox"/> Description	<input checked="" type="checkbox"/> Qty	<input checked="" type="checkbox"/> Context Note	<input checked="" type="checkbox"/> Foot Note	<input checked="" type="checkbox"/> UOM
	480	583146MA Add to pick list	PULLEY				
	482	2001022MA Add to pick list	KEY, SQUARE				
	484	15X112MA Add to pick list	NUT, 1/4-20				
	485	1501158MA Add to pick list	SPACER, FRICTION PULLEY				
	490	582957 YZ Add to pick list	RETAINER, BALL BRNG				
	491	043846 Add to pick list	BEARING, BALL				
	493	001X92MA Add to pick list	BOLT, HEX - 0.31- 18X0.50				
	499	710026 Add to pick list	NUT, 5/16-18 HEXWDFLLK				
	500	1501133E012 Add to pick list	HOUSING, ASSY				
	509	760040MA Add to pick list	PLUG, CHRISTMAS TREE				
	510	760660E701MA Add to pick list	BLADE, SCRAPER				
	511	340720MA Add to pick list	BOLT, CARRIAGE				
	514	710026 Add to pick list	NUT				
	520	760597E701MA Add to pick list	AUGER, ASSY, LH				
	521	760598E701MA Add to pick list	AUGER, ASSY, RH				
	522	9524MA Add to pick list	BOLT				
	523	3943MA Add to pick list	SPACER, SLEEVE				
	524	73826 Add to pick list	NUT, 1/4-20				
	525	53757MA Add to pick list	BEARING,FLANGE				
	527	70984 Add to pick list	SCREW, 5/16-18 x 0.75				
	528		UNKNOWN				
	536	340720MA Add to pick list	BOLT				
	540	762376E701MA Add to pick list	SKID, HEIGHT ADJUST				
	541	340720MA Add to pick list	BOLT, 5/16-18 X .75				
	544	710026 Add to pick list	NUT, 5/16-18 REGHEX				

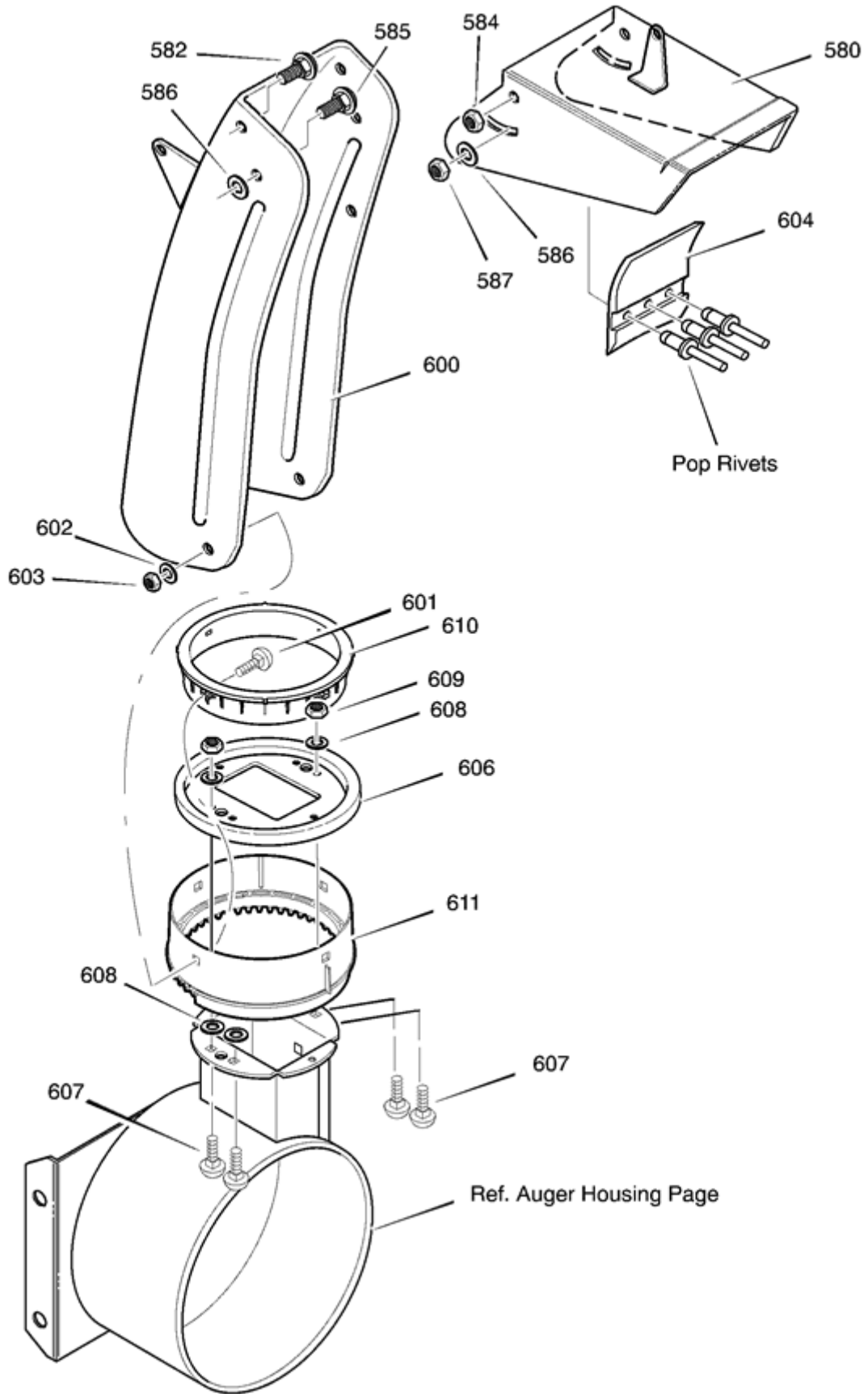


Supercessions	Ref #	Part #	<input checked="" type="checkbox"/> Description	<input checked="" type="checkbox"/> Qty	<input checked="" type="checkbox"/> Context Note	<input checked="" type="checkbox"/> Foot Note	<input checked="" type="checkbox"/> UOM
	852-1	1501076 YZ Add to pick list	ASSEMBLY, YOKE & ROD				
	852-2	313431MA Add to pick list	WASHER, CURVED SPRING				
	852-3	1501067MA Add to pick list	GEAR, CHUTE ROTATION 9T				
	852-4	17X170MA Add to pick list	WASHER				
	852-5	71082 Add to pick list	PIN, COTTER				
	852-6	1501051V701 Add to pick list	BRACKET, GEAR MOUNT				
	852-7	579493MA Add to pick list	PIN, COTTER				
	852-8	1501075 YZ Add to pick list	ASSEMBLY, YOKE ADAPTER YZ				
	852-9	711682MA Add to pick list	PIN, HAIR				
	852-10	578060MA Add to pick list	PIN, UNIVERSAL JOINT				
	852-11	578309MA Add to pick list	PIN, CLEVIS				
	852-12	579493MA Add to pick list	PIN, COTTER				
	852-13	578063MA Add to pick list	HOUSING, UNIVERSAL				
	854	307399MA Add to pick list	KNOB, SLEEVE				
	855	309312MA Add to pick list	FLATWASHER				
	856	73664MA Add to pick list	NUT, PUSH ON 3/8"				
	860	581618MA Add to pick list	EYE BOLT 3/8-16X6.00				
	861	148MA Add to pick list	GROMMET, EYE BOLT				
	862	308145MA Add to pick list	BOOT, EYE BOLT				
	863	71045 Add to pick list	NUT, 3/8-16 HEXJAM				
	864	71072 Add to pick list	FLATWASHER .406X.81X.066				
	865	309344MA Add to pick list	ADAPTER, BOOT				
	866	71072 Add to pick list	WASHER, FLAT				
	867	71046 Add to pick list	NUT, 3/8-16 HEXNYL				
	868	002X98MA Add to pick list	BOLT, CARRIAGE 1/4-20 X 1.00				
	869	780029 Add to pick list	NUT, 1/4-20				

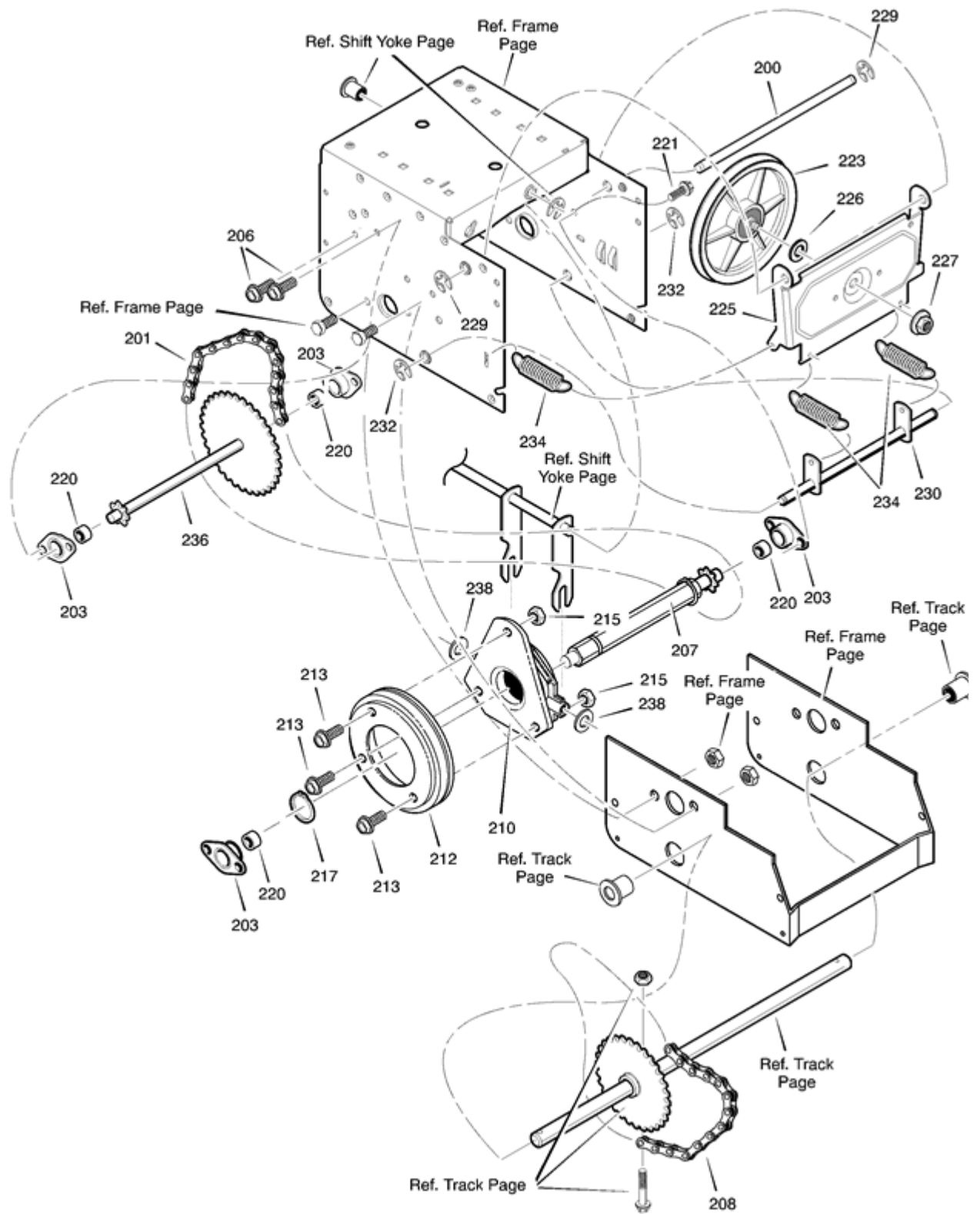


870 1501074 YZ CRANK, ASSY CHUTE
[Add to pick list](#)

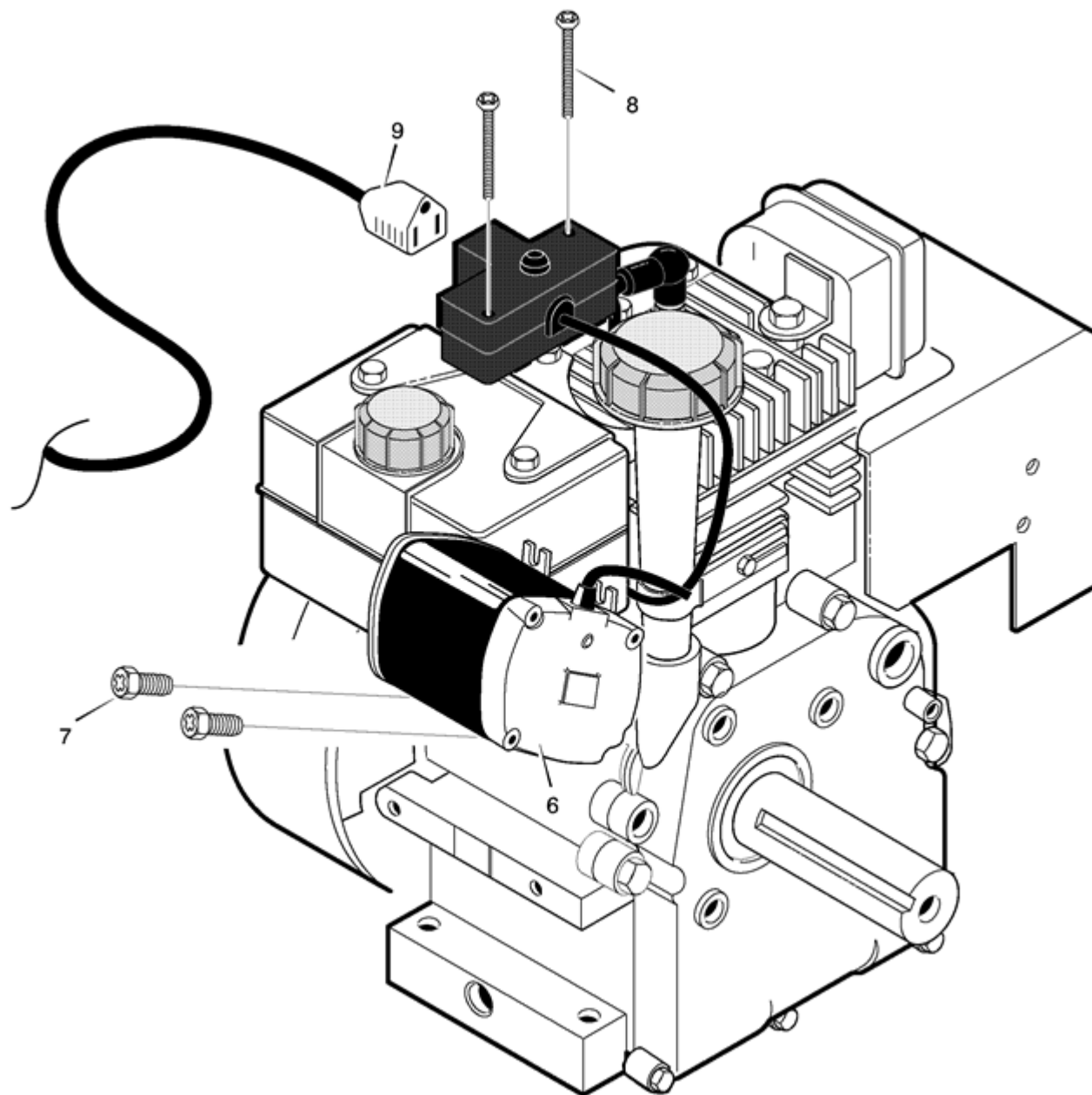
Supercessions	Ref #	Part #	<input checked="" type="checkbox"/> Description	<input checked="" type="checkbox"/> Qty	<input checked="" type="checkbox"/> Context Note	<input checked="" type="checkbox"/> Foot Note	<input checked="" type="checkbox"/> UOM
	730	578992 Add to pick list	CLUTCH HANDLE LH				
	731	578993 Add to pick list	CLUTCH HANDLE RH				
	732	905531MA Add to pick list	BOLT, 1/4-20 X .50				
	760	585523 Add to pick list	PANEL, CONTROL				
	761	316042MA Add to pick list	SCREW, 10 X .62				
	765	578866E701 Add to pick list	BRACKET, PANEL				
	766	302900MA Add to pick list	SCREW, 5/16-18 x 1.75				
	767	071060 Add to pick list	WASHER, HVSP TLK				
	768	71037 Add to pick list	NUT, 5/16-18				
	794	908913MA Add to pick list	NUT, 1/4-20				




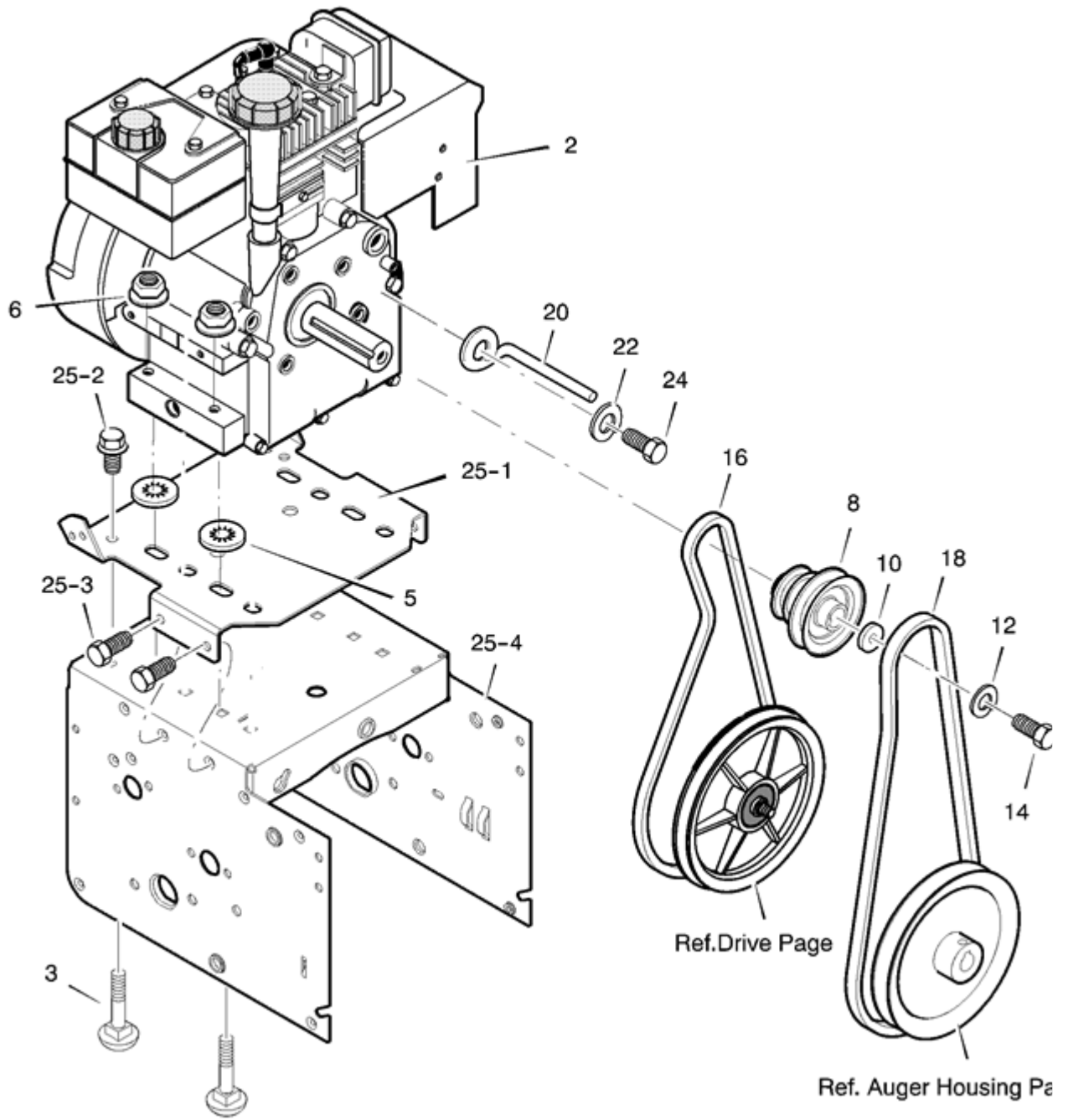
Supercessions	Ref #	Part #	<input checked="" type="checkbox"/> Description	<input checked="" type="checkbox"/> Qty	<input checked="" type="checkbox"/> Context Note	<input checked="" type="checkbox"/> Foot Note	<input checked="" type="checkbox"/> UOM
	580	761168E701MA Add to pick list	CHUTE, UPPER W/REMOTE				
	582	578088MA Add to pick list	SCREW, 5/16-18 x 0.75				
	584	71038 Add to pick list	NUT				
	585	578088MA Add to pick list	SCREW, 5/16-18 x 0.75				
	586	6711MA Add to pick list	PLASTIC WASHER				
	587	71038 Add to pick list	NUT				
	600	761329E701 Add to pick list	CHUTE, LOWER W/REMOTE				
	601	586280 Add to pick list	BOLT				
	602	71071 Add to pick list	WASHER, FLAT				
	603	71038 Add to pick list	NUT				
	604	762322MA Add to pick list	FLAP				
	606	585214 YZ Add to pick list	CHUTE COLLAR				
	607	002X98MA Add to pick list	BOLT				
	608	071067MA Add to pick list	WASHER, FLAT				
	609	780029 Add to pick list	NUT				
	610	337227MA Add to pick list	RETAINER, RING INNER				
	611	1501054MA Add to pick list	RETAINER, RING OUTER				



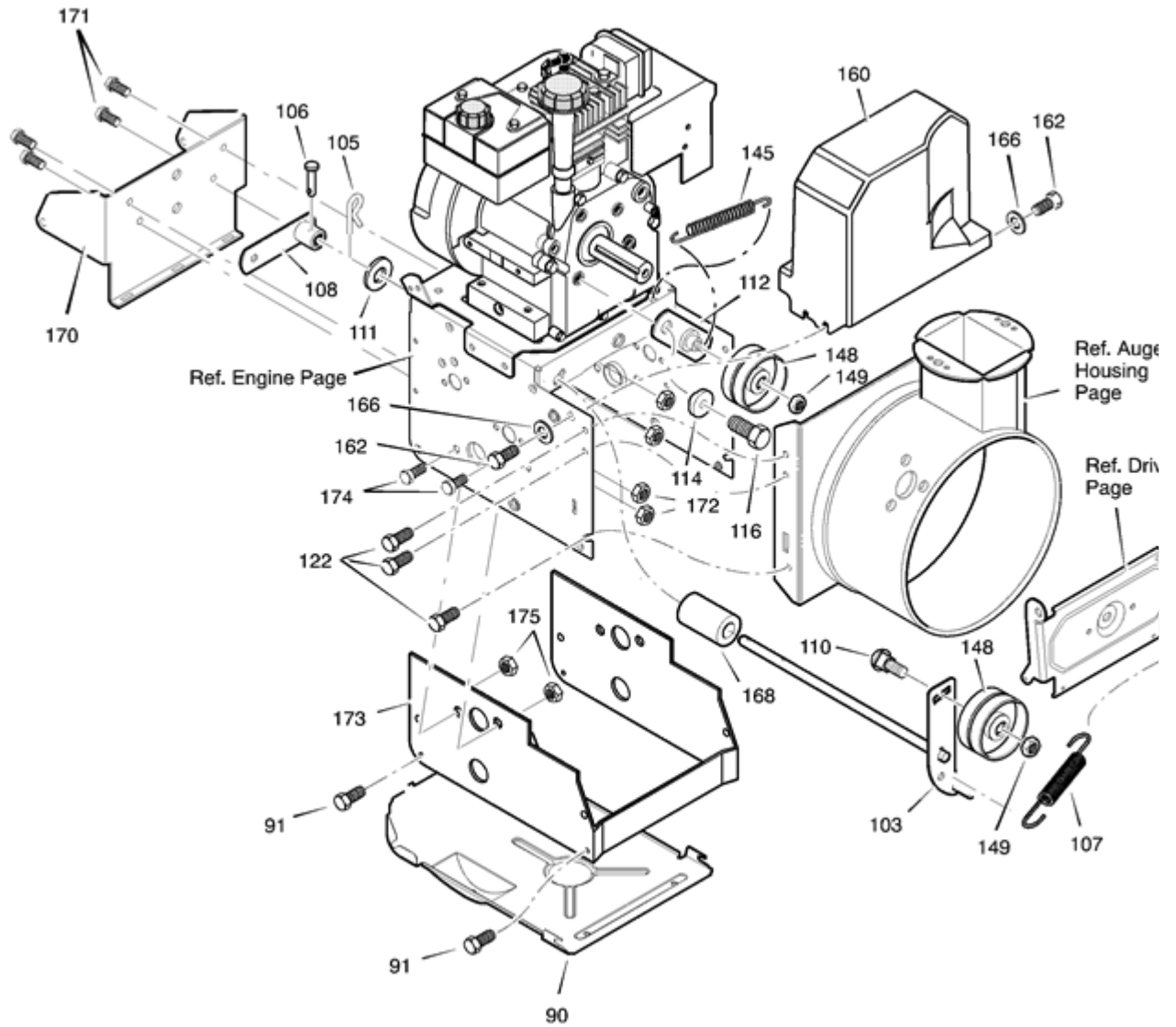
Supercessions	Ref #	Part #	<input checked="" type="checkbox"/> Description	<input checked="" type="checkbox"/> Qty	<input checked="" type="checkbox"/> Context Note	<input checked="" type="checkbox"/> Foot Note	<input checked="" type="checkbox"/> UOM
	200	1501092 YZ Add to pick list	LF AXLE, SWING PLATE YZ				
	201	579851MA Add to pick list	CHAIN, ROLLER #42x19.00 LG				
	203	579850MA Add to pick list	RETAINER, BEARING				
	206	780055MA Add to pick list	SCREW, TAP 5/16-18 x 0.5				
	207	1501101 Add to pick list	ASSY, HEX SHAFT				
	208	1501233 Add to pick list	CHAIN, ROLLER				
	210	337029MA Add to pick list	BEARING, TRUNION CLUTCH R				
	212	53830 Add to pick list	Track, FRICTION DISC				
	213	001X38MA Add to pick list	SCREW, 1/4-20 x 0.63				
	215	303008MA Add to pick list	NUT, KEPS HEX 1/4- 20				
	217	579859MA Add to pick list	RING, RETEXT				
	220	579863MA Add to pick list	BEARING, BALL				
	221	780055MA Add to pick list	SCREW, TAP 5/16-18 X .50				
	223	1501063 Add to pick list	ASSY, FRICTION PULLY				
	225	1501057 YZ Add to pick list	LF PLATE, SWINGING YZ				
	226	1501158MA Add to pick list	SPACER, FRICTION PULLEY				
	227	15X114 Add to pick list	NUT, FLANGE LOCK 3/8-24				
	229	11X30MA Add to pick list	RETAINER, RING				
	230	1501107 YZ Add to pick list	LF ASSY, SPRING LINK YZ				
	232	11X30MA Add to pick list	RETAINER, RING				
	234	165X112MA Add to pick list	SPRING, EXTENSION				
	236	1501102 Add to pick list	WLD, INTERMED SPROCKET				
	238	71074 Add to pick list	WASHER, FLAT				



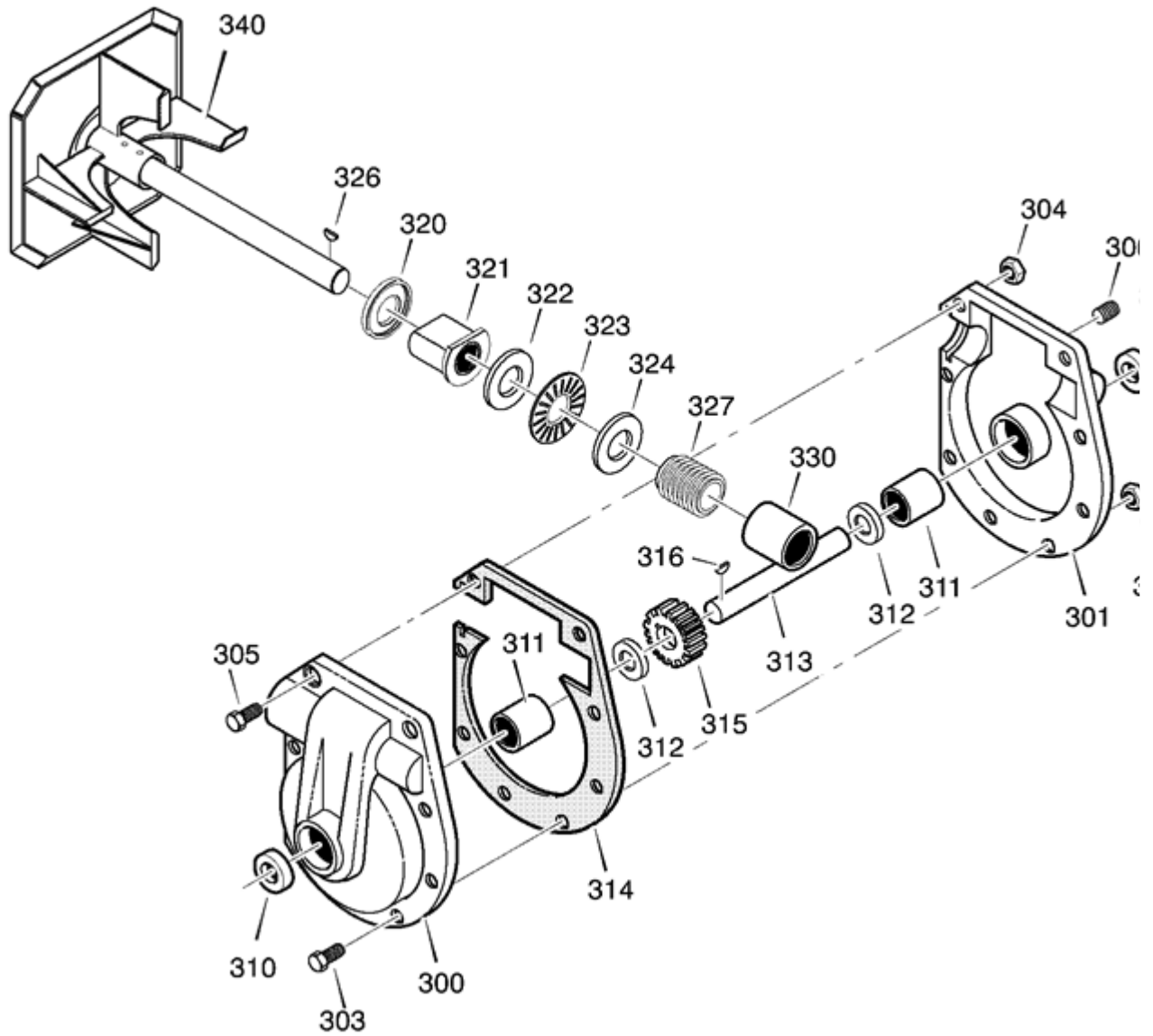
Supercessions	Ref #	Part #	<input checked="" type="checkbox"/> Description	<input checked="" type="checkbox"/> Qty	<input checked="" type="checkbox"/> Context Note	<input checked="" type="checkbox"/> Foot Note	<input checked="" type="checkbox"/> UOM
	6	761290 Add to pick list	MOTOR, STARTER				
	7	6216 Add to pick list	SCREW				
	8	6217 Add to pick list	SCREW				
	9	761332 Add to pick list	CORD, STARTER				



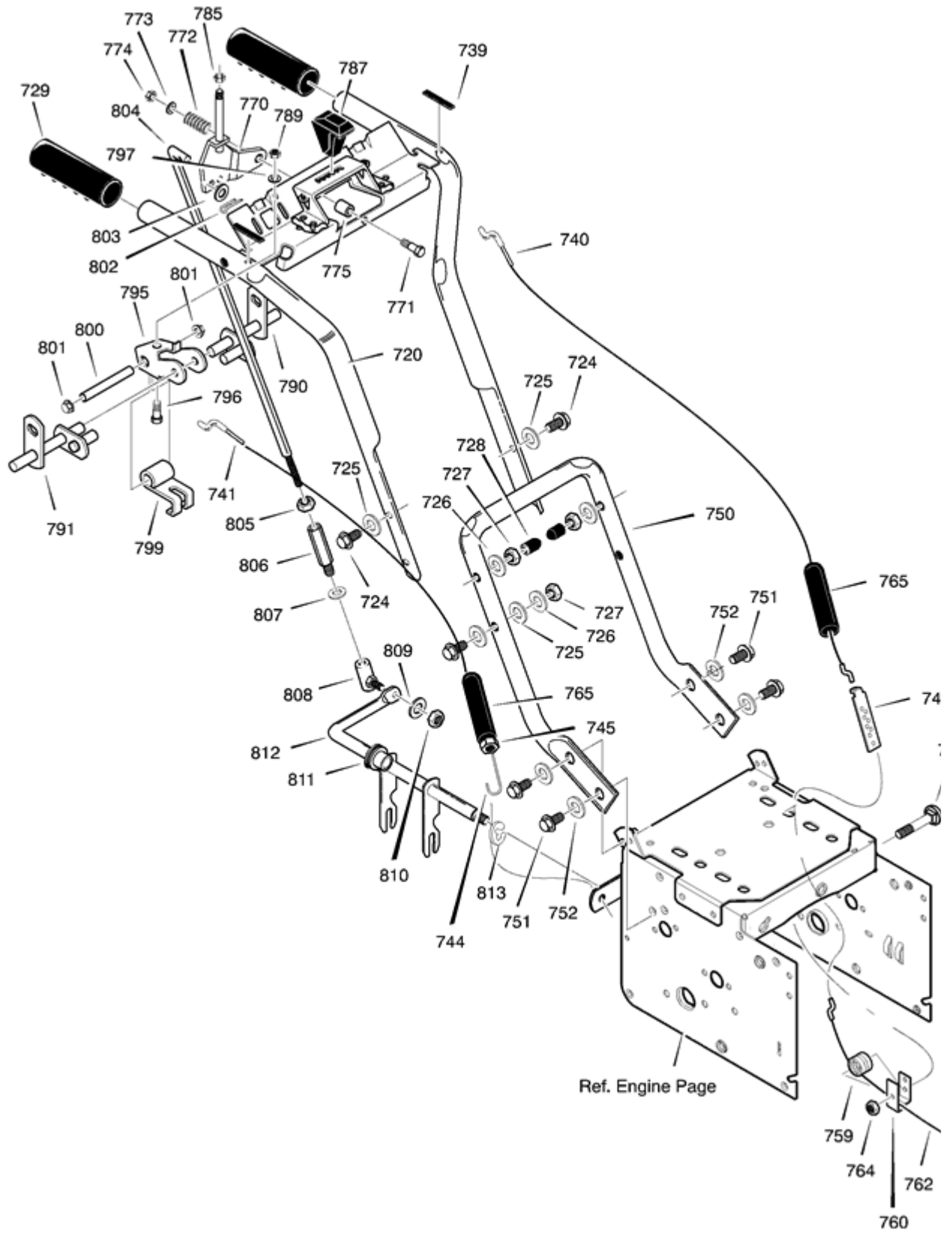
Supercessions	Ref #	Part #	<input checked="" type="checkbox"/> Description	<input checked="" type="checkbox"/> Qty	<input checked="" type="checkbox"/> Context Note	<input checked="" type="checkbox"/> Foot Note	<input checked="" type="checkbox"/> UOM
	2	----- Add to pick list	ENGINE				
	3	002X97MA Add to pick list	BOLT, CARRIAGE 5/16-18				
	5	208X76 Add to pick list	RETAINER, PUSH				
	6	710026 Add to pick list	NUT, HEXWDFLLK 5/16-18				
	8	1501109MA Add to pick list	PULLEY, ENGINE				
	10	710247 Add to pick list	WASHER				
	12	71063 Add to pick list	WASHER,HVSPTLK .38ID				
	14	71015 Add to pick list	SCREW, 3/8-24 x 1.00				
	16	579932MA Add to pick list	BELT, V 3L 33.13LG				
	18	585416MA Add to pick list	BELT, V 4L 38.1MF16" 5-10				
	20	1501201MA Add to pick list	GUIDE, BELT				
	22	071060 Add to pick list	WASHER, SPTLK .31X.58X.08				
	24	710097 Add to pick list	SCREW, 5/16-24 x 0.75				
	25	----- Add to pick list	FRAME ASSEMBLY				
	25-1	1501062E012 Add to pick list	PLATE, ENGINE MOUNT				
	25-2	310169MA Add to pick list	SCREW, TAP 1/4-20 X .63				
	25-3	780055MA Add to pick list	SCREW, TAP 5/16-18 X .50				
	25-4	1501232E012 Add to pick list	FRAME, MOTOR BOX				
	--	F-011090M Add to pick list	OWNER S MANUAL				



Supercessions	Ref #	Part #	Description	Qty	Context Note	Foot Note	UOM
	90	1501055E701MA Add to pick list	COVER, BOTTOM				
	91	310169MA Add to pick list	SCREW, 1/4-20X .63				
	103	1501226 YZ Add to pick list	IDLER ASSEMBLY, AUGER				
	105	711682MA Add to pick list	PIN, HAIR .38DIAx1.64LG				
	106	761761MA Add to pick list	PIN, KLIK 3/16 DIA				
	107	165X159MA Add to pick list	SPRING, TENSION				
	108	761675 YZ Add to pick list	ASSY., SPRING ATTACH				
	110	585781MA Add to pick list	BOLT, 3/8-16X1.25 CARR.				
	111	711617 Add to pick list	WASHER, FLAT				
	112	1501112 YZ Add to pick list	BRACKET ASSEMBLY, IDLER				
	114	1501065MA Add to pick list	BUSHING, IDLER BRACKET				
	116	710097 Add to pick list	SCREW 5/16-24 X .75				
	122	780055MA Add to pick list	SCREW, TAP 5/16- 18 X .50				
	145	53704MA Add to pick list	SPRING, IDLER TRACTION DRIVE				
	148	50793MA Add to pick list	PULLEY, IDLER				
	149	590 Add to pick list	NUT, JAM 3/8-16				
	160	1501153 Add to pick list	COVER, BELT				
	162	26X306MA Add to pick list	SCREW, TAP 1/4-20 X .63				
	166	071067MA Add to pick list	WASHER, FLAT				
	168	1501200MA Add to pick list	SPACER, AUGER BRACKET				
	170	1501220E701 Add to pick list	BRACKET, TRACK SUPPORT				
	171	9357MA Add to pick list	SCREW, 5/16-18 x 0.75				
	172	710026 Add to pick list	NUT				
	173	1501219E012 Add to pick list	EXTENSION, FRAME				
	174	71003 Add to pick list	SCREW, 3/8-16 X 0.75				
	175	071111 Add to pick list	NUT, 3/8-16				



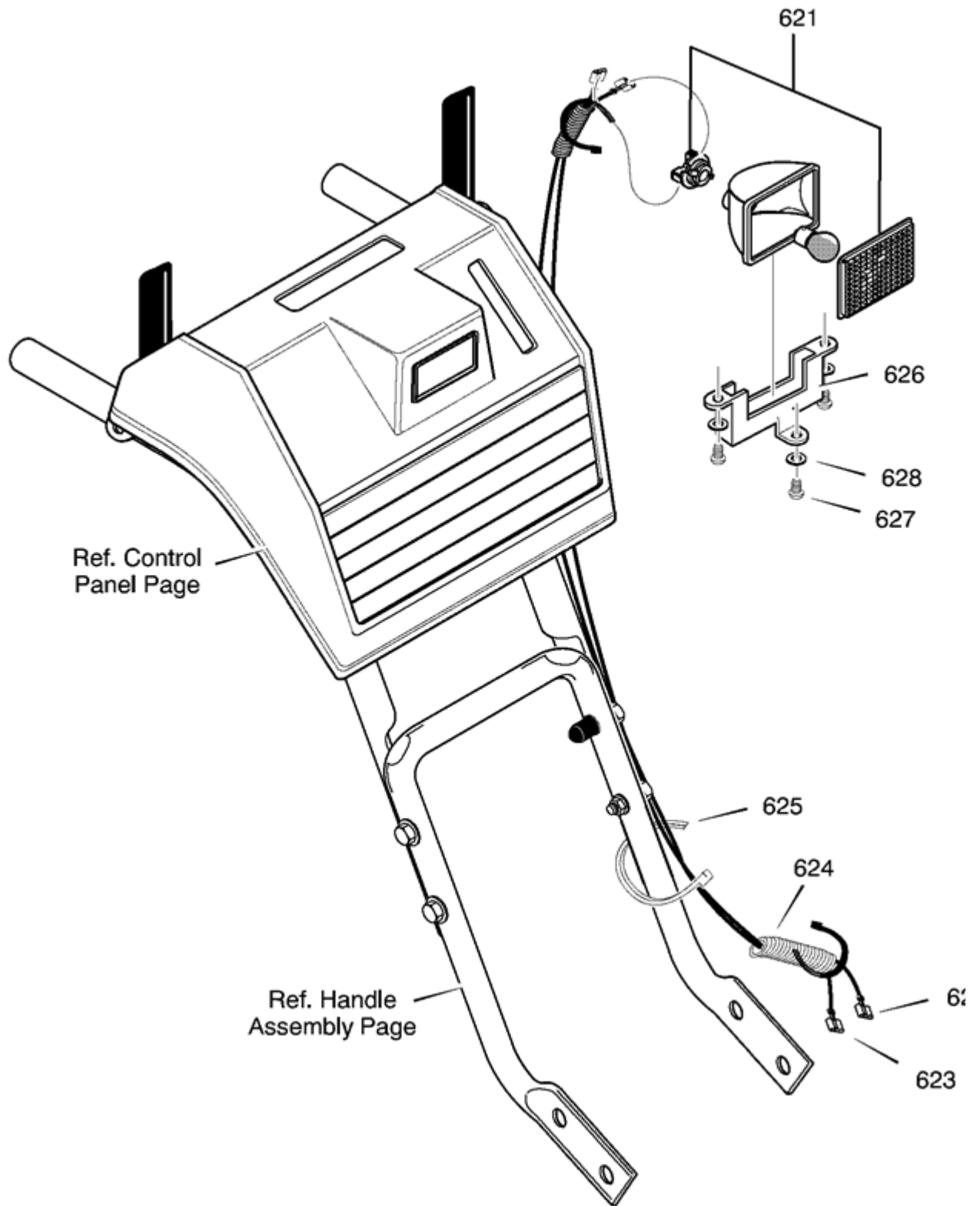
Supercessions	Ref #	Part #	<input checked="" type="checkbox"/> Description	<input checked="" type="checkbox"/> Qty	<input checked="" type="checkbox"/> Context Note	<input checked="" type="checkbox"/> Foot Note	<input checked="" type="checkbox"/> UOM
	300	896MA Add to pick list	CASE, GEAR, RH				
	301	895MA Add to pick list	CASE, GEAR, LH				
	303	910828MA Add to pick list	SCREW,1/4-20X.75				
	304	71100MA Add to pick list	NUT,1/4-20				
	305	330434MA Add to pick list	NUT, 1/4-20 HEXKEPS				
	306	53749MA Add to pick list	SCREW, 3/8-16 x 0.50				
	310	780151MA Add to pick list	SEAL, OIL				
	311	53743 Add to pick list	BEARING, FL				
	312	53748MA Add to pick list	WASHER, FLAT				
	313	760528MA Add to pick list	SHAFT, AUGER OUTPUT				
	314	897MA Add to pick list	GASKET, GEAR BOX				
	315	53730MA Add to pick list	WORM GEAR				
	316	73905MA Add to pick list	KEY, WOODRUFF #61				
	320	53737MA Add to pick list	BRNG, FL				
	321	583126MA Add to pick list	SHAFT, AUGER INPUT				
	322	48275MA Add to pick list	COLLAR, THRUST				
	323	50684MA Add to pick list	PIN, SPRING				
	324	48275MA Add to pick list	WASHER, FLAT				
	326	50795MA Add to pick list	BRNG, FL				
	327	53732MA Add to pick list	SEAL, OIL				
	330	53731MA Add to pick list	BEARING				
	340	1501147E701MA Add to pick list	IMPELLER				
	--	333431MA Add to pick list	10oz TUBE LUBRIPLATE		(Not Illustrated)		











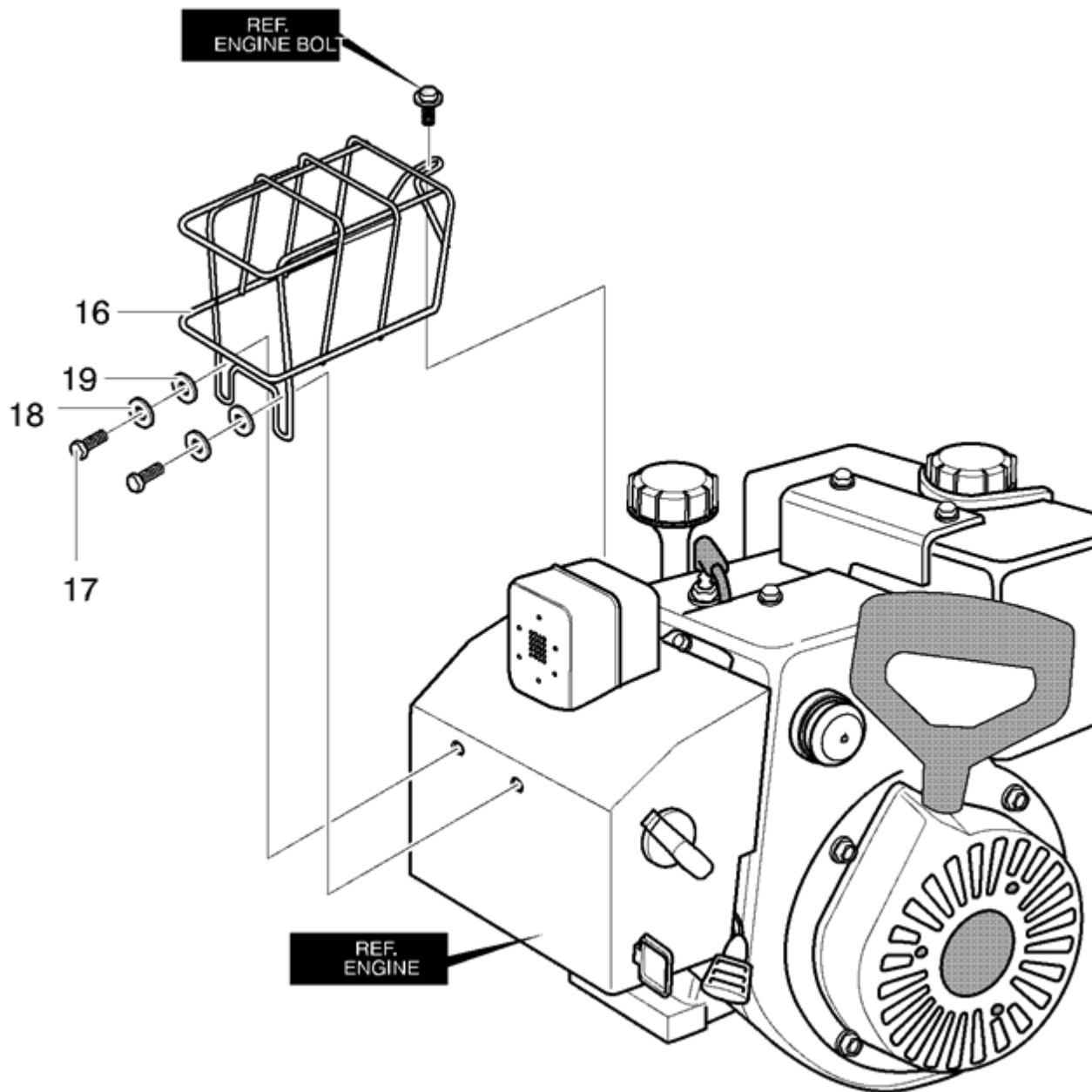
Supercessions	Ref #	Part #	<input checked="" type="checkbox"/> Description	<input checked="" type="checkbox"/> Qty	<input checked="" type="checkbox"/> Context Note	<input checked="" type="checkbox"/> Foot Note	<input checked="" type="checkbox"/> UOM
	720	760192E701 Add to pick list	ASSY, HANDLE				
	723	71007 Add to pick list	SCREW				
	724	7288MA Add to pick list	SCREW				
	725	71072 Add to pick list	WASHER, FLAT				
	726	71062 Add to pick list	WASHER				
	727	71044 Add to pick list	NUT				
	728	7289MA Add to pick list	STOP, PLASTIC				
	729	50792MA Add to pick list	GRIP, HANDLE				
	739	4049MA Add to pick list	BUMPER				
	740	1501124MA Add to pick list	CABLE, CLUTCH				
	741	761590MA Add to pick list	CABLE, CLUTCH				
	743	313441MA Add to pick list	BRACKET, CABLE ADJUST				
	744	1673MA Add to pick list	SPRING, CLUTCH				
	745	780029 Add to pick list	NUT, HEX				
	750	5543E701MA Add to pick list	HANDLE, LOWER				
	751	70984 Add to pick list	SCREW				
	752	071060 Add to pick list	WASHER, SPTLK				
	754	70984 Add to pick list	SCREW				
	758	01X186MA Add to pick list	BOLT, HEX				
	759	579860MA Add to pick list	SPOOL, CABLE				
	760	1501059 YZ Add to pick list	BRKT, SPOOL				
	762	1501122MA Add to pick list	CABLE, LOWER DRIVE				
	764		UNKNOWN				
	765	308146MA Add to pick list	BOOT, CABLE				
	770	581964 Add to pick list	BRACKET, SHIFT				
	771	7288MA Add to pick list	SCREW				
	772	50786MA	SPRING				

Add to pick list

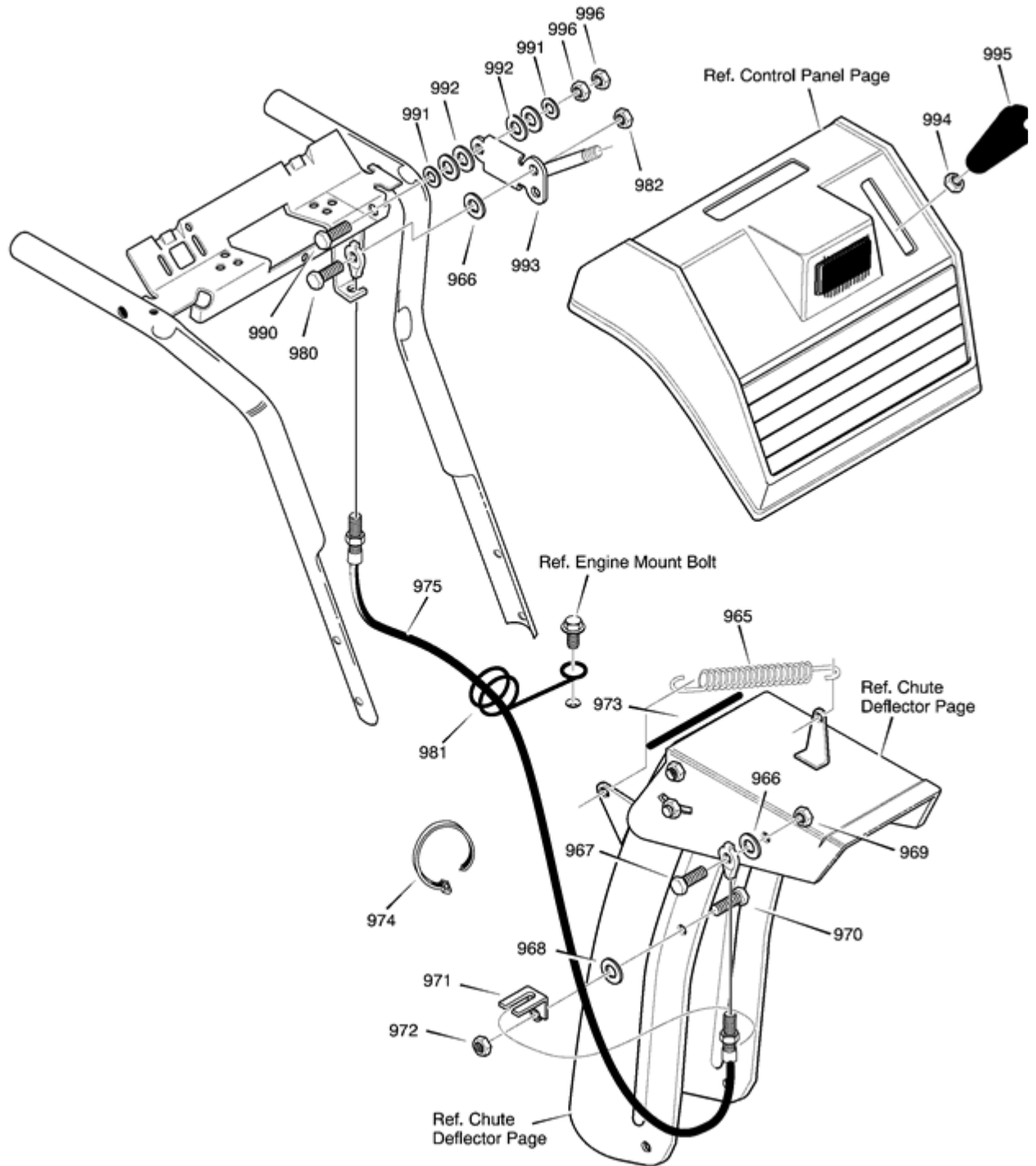
	773	71072 Add to pick list	WASHER, FLAT				
	774	71046 Add to pick list	NUT, HEX				
	775	579183 Add to pick list	SPACER, SHIFT				
	785	071034 Add to pick list	NUT, HEX				
	787	585522 Add to pick list	KNOB, SHIFT				
	789		UNKNOWN				
	790	578926 Add to pick list	ROD, ASSY LH				
	791	578924 Add to pick list	ROD, ASSY RH				
	795	579002 Add to pick list	BRACKET, CAM				
	796	313676 Add to pick list	SCREW				
	797	071060 Add to pick list	WASHER, SPTLK				
	798	71037 Add to pick list	NUT, HEX				
	799	8417MA Add to pick list	CAM LOCK				
	800	584673MA Add to pick list	PIN, SPRING PIVOT				
	801	73664MA Add to pick list	NUT, PUSH ON				
	802	071081 Add to pick list	PIN, COTTER				
	803	71071 Add to pick list	FLATWASHER				
	804	581079 YZ Add to pick list	ROD, CONTROL				
	805	71042MA Add to pick list	NUT, HEX				
	806	6352MA Add to pick list	ADAPTOR, SPEED				
	807	071060 Add to pick list	WASHER				
	808	50782MA Add to pick list	JOINT, STEEL BALL				
	809	071060 Add to pick list	WASHER				
	810	71042MA Add to pick list	NUT, HEX				
	811	579944MA Add to pick list	BEARING, FL				
	812	1501110 YZ Add to pick list	ROD, YOKE				
	813	11X30MA Add to pick list	RETAINER, RING				





Supercessions	Ref #	Part #	<input checked="" type="checkbox"/> Description	<input checked="" type="checkbox"/> Qty	<input checked="" type="checkbox"/> Context Note	<input checked="" type="checkbox"/> Foot Note	<input checked="" type="checkbox"/> UOM
	621	581575MA Add to pick list	HEADLIGHT ASSY				
	622	305743 Add to pick list	WIRE, ALTERNATOR				
	623	305740 Add to pick list	WIRE, HEADLIGHT				
	624	6636 Add to pick list	CONDUIT, SPLIT				
	625	57444 Add to pick list	CABLE TIE				
	626	578921 Add to pick list	BRACKET, HEADLAMP				
	627	901696 Add to pick list	SCREW				
	628	901736 Add to pick list	WASHER, FLAT				









Ref #	Part #	<input checked="" type="checkbox"/> Description	<input checked="" type="checkbox"/> Qty	<input checked="" type="checkbox"/> Context Note	<input checked="" type="checkbox"/> Foot Note	<input checked="" type="checkbox"/> UOM
16	304436 <i>Add to pick list</i>	GUARD, MUFFLER				
17	304807 <i>Add to pick list</i>	SCREW				
18	304810 <i>Add to pick list</i>	WASHER				
19	304809 <i>Add to pick list</i>	WASHER				



Supercessions	Ref #	Part #	<input checked="" type="checkbox"/> Description	<input checked="" type="checkbox"/> Qty	<input checked="" type="checkbox"/> Context Note	<input checked="" type="checkbox"/> Foot Note	<input checked="" type="checkbox"/> UOM
↷	965	318468MA Add to pick list	SPRING, TENSION RETURN				
	966	711666 Add to pick list	WASHER, FLAT				
↷	967	310088MA Add to pick list	BOLT, 5/16-18				
↷	968	73787MA Add to pick list	WASHER, FLAT				
↷	969	302635 Add to pick list	NUT, 1/4-20				
↷	970	313676 Add to pick list	SCREW, 5/16-18 x 0.75				
↷	971	306447 YZ Add to pick list	BRACKET, CABLE CHUTE				
↷	972	71391 Add to pick list	NUT, 5/16-18				
↷	973	1001221MA Add to pick list	TRIM				
↷	974	760113MA Add to pick list	TIE, CABLE				
↷	975	1501261MA Add to pick list	CABLE, CHUTE CONTROL				
↷	980	310088MA Add to pick list	BOLT, 5/16-18				
↷	981	780220MA Add to pick list	WIRE FORM				
↷	982	302635 Add to pick list	NUT, 1/4-10				
↷	990	4058 Add to pick list	SCREW, 3/8-16 x 1.75				
↷	991	71072 Add to pick list	WASHER, FLAT				
↷	992	4051MA Add to pick list	WASHER, SPRING				
↷	993	579040 Add to pick list	HANDLE ASSY, SPEED CONTROL				
↷	994	71044 Add to pick list	NUT, 3/8-16 REGHEX				
↷	995	306689MA Add to pick list	HANDLE, 3/8-16 MOLDED				
↷	996	71046 Add to pick list	NUT, 3/8-16 HEX				

Supercessions	Ref #	Part #	<input checked="" type="checkbox"/> Description	<input checked="" type="checkbox"/> Qty	<input checked="" type="checkbox"/> Context Note	<input checked="" type="checkbox"/> Foot Note	<input checked="" type="checkbox"/> UOM
	650	1501221 Add to pick list	SHAFT, AXLE				
	652	579901 Add to pick list	SPROCKET AND HUB				
	653	73839MA Add to pick list	BOLT, HEX				
	654	780029 Add to pick list	NUT				
	660	580635E701 Add to pick list	PLATE, TRACK DIRECT				
	661	51447MA Add to pick list	SPRING, DRIVE IDLER				
	665	316863MA Add to pick list	BEARING, TRACK				
	666	302628MA Add to pick list	SCREW				
	667	302635 Add to pick list	NUT				
	670	580763 Add to pick list	SPACER				
	671	712120MA Add to pick list	WASHER, FLAT				
	672	318719MA Add to pick list	SPROCKET				
	673	1501114MA Add to pick list	BEARING, AXLE				
	675	580984 Add to pick list	TRACK				
	678	239MA Add to pick list	RING, RETAINER				
	679	322424MA Add to pick list	PIN, KLIK				
	680	580876 Add to pick list	SHAFT, IDLER				
	681	579597MA Add to pick list	WASHER, FLAT				
	682	318720MA Add to pick list	WHEEL IDLER				
	688	579597MA Add to pick list	WASHER, FLAT				
	689	302847 Add to pick list	PIN, COTTER				
	700	580657E701 Add to pick list	PEDAL, FOOT				
	701	6001MA Add to pick list	BOLT				
	703	710026 Add to pick list	NUT				
	705	580652 Add to pick list	SHAFT				
	706	71072 Add to pick list	WASHER, FLAT				

	707	711906 Add to pick list	NUT				
	710	302618MA Add to pick list	SCREW				
	711	071067MA Add to pick list	WASHER, FLAT				
	712	581033 YZ Add to pick list	BRACKET, TRACK TENSIONER				
	713	780029 Add to pick list	NUT				
	714	1501222E701 Add to pick list	BRACE				
	715	6104MA Add to pick list	WASHER				